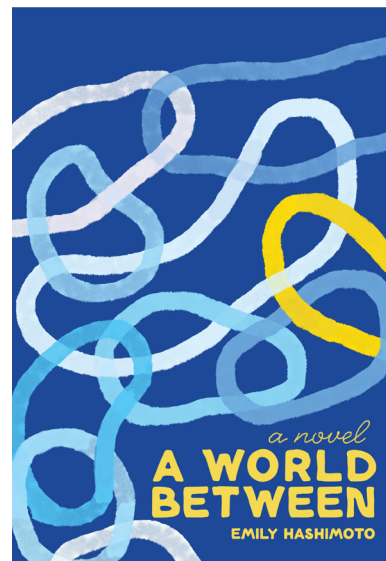


## READING GROUP GUIDE

### **A WORLD BETWEEN** by Emily Hashimoto

978-1-936932-95-5 pbk  
\$17.95 • 400 pages  
September 15, 2020



1. *A World Between* alternates between the two central characters' points of view: what do you think of this stylistic choice? What are the possibilities and limitations of the alternating perspectives?
2. How do Leena's and Eleanor's mix of identities affect how they move about the world, and how they navigate each other?
3. What are Leena's and Eleanor's different understandings of family, biological and chosen?
4. Leena and Eleanor both feel beholden to family and society, although in different ways. How do they each understand responsibility and duty? How do their actions differ as a result?
5. Does *A World Between* adhere or subvert the tradition of romantic comedy storylines? Why or why not?
6. Were you surprised by the book's ending? If so, what else did you expect?
7. There are moments of narrative ambiguity throughout the book, where the reader is not privy to a character's motivations or to a narrative outcome. How does ambiguity relate to these specific characters, or to queer storytelling more generally?

For review copy requests or to arrange for an interview, contact Jisu Kim at [jisu@feministpress.org](mailto:jisu@feministpress.org)

